

Some observations of forage fish in the Salish Sea

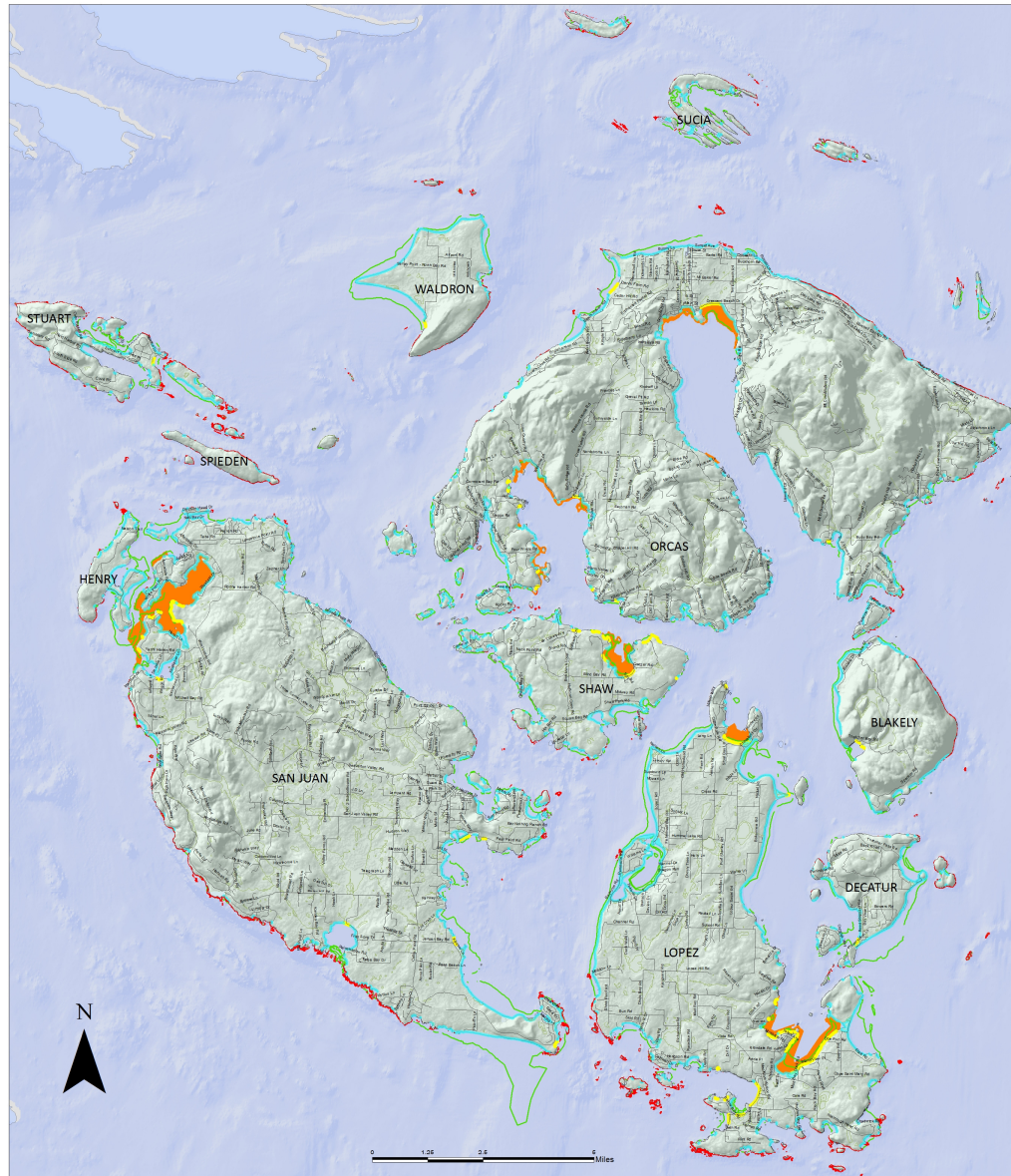
Eric Eisenhardt, M.Sc.
Research Curator
The Whale Museum

Overview

Friends of the San Juans (Tina Whitman)

Tombolo (Dr. Gary Greene)

local naturalists (Dr. Gene Helfman, *et al.*)



San Juan County Nearshore Resources

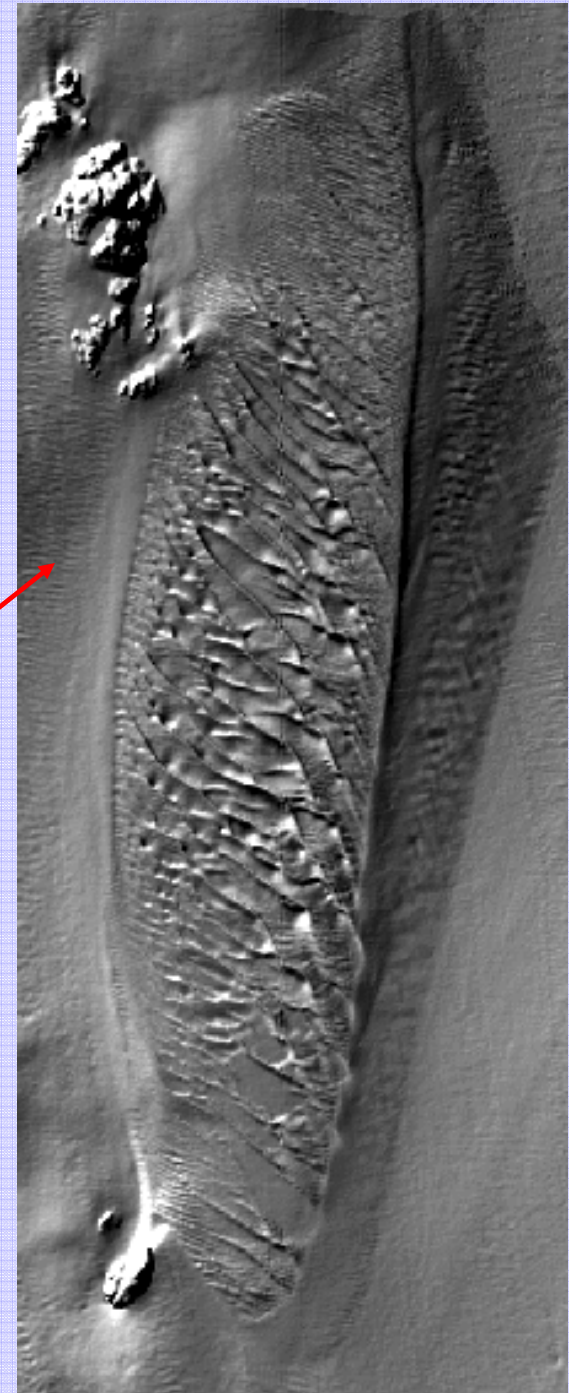
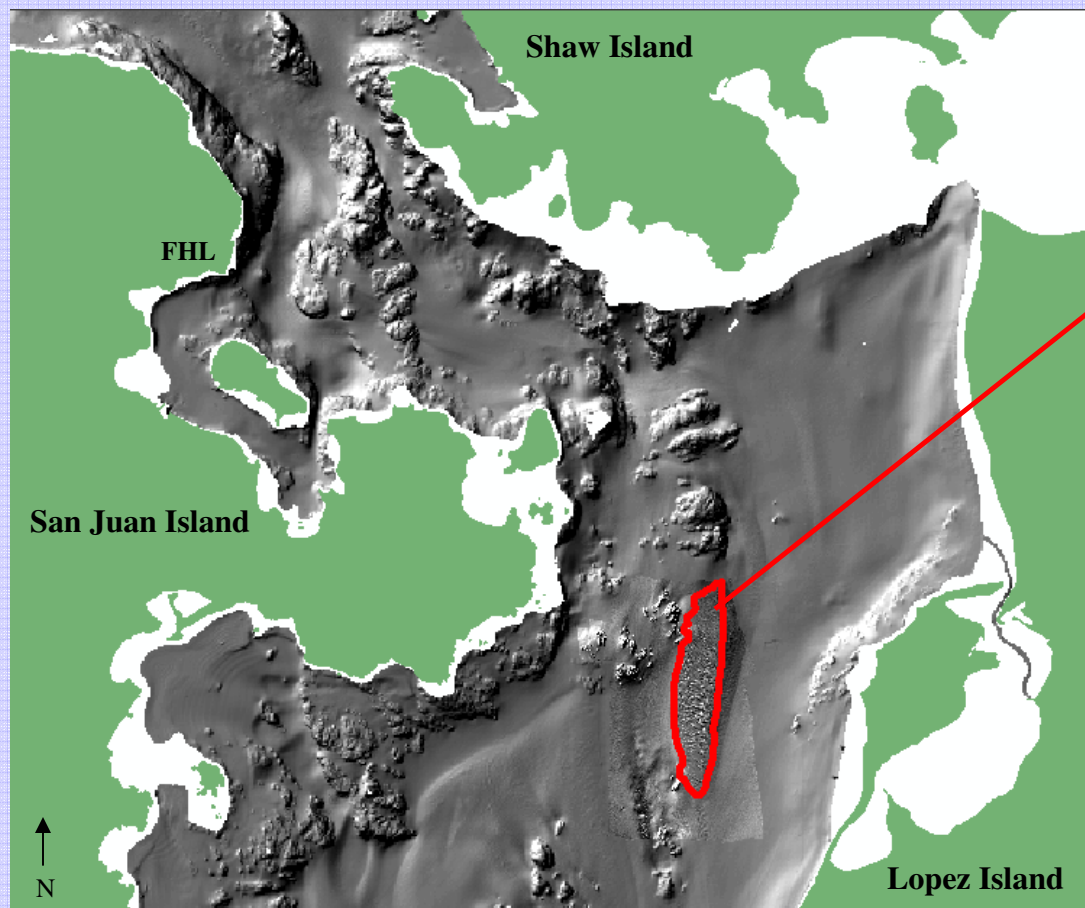
Legend

- County Roads (SJC)
- Wetlands and Streams (SJC)
- Deep Water Edge of Eelgrass (FSJ, DNR, and UW 2004)
- Documented Forage Fish Spawn Habitat (WDFW and FSJ 2004)
- Potential Forage Fish Spawn Habitat (WDFW and FSJ 2004)
- Pacific Herring Spawning Grounds (WDFW 2012)
- Bull Kelp (FSJ and DNR 2007)



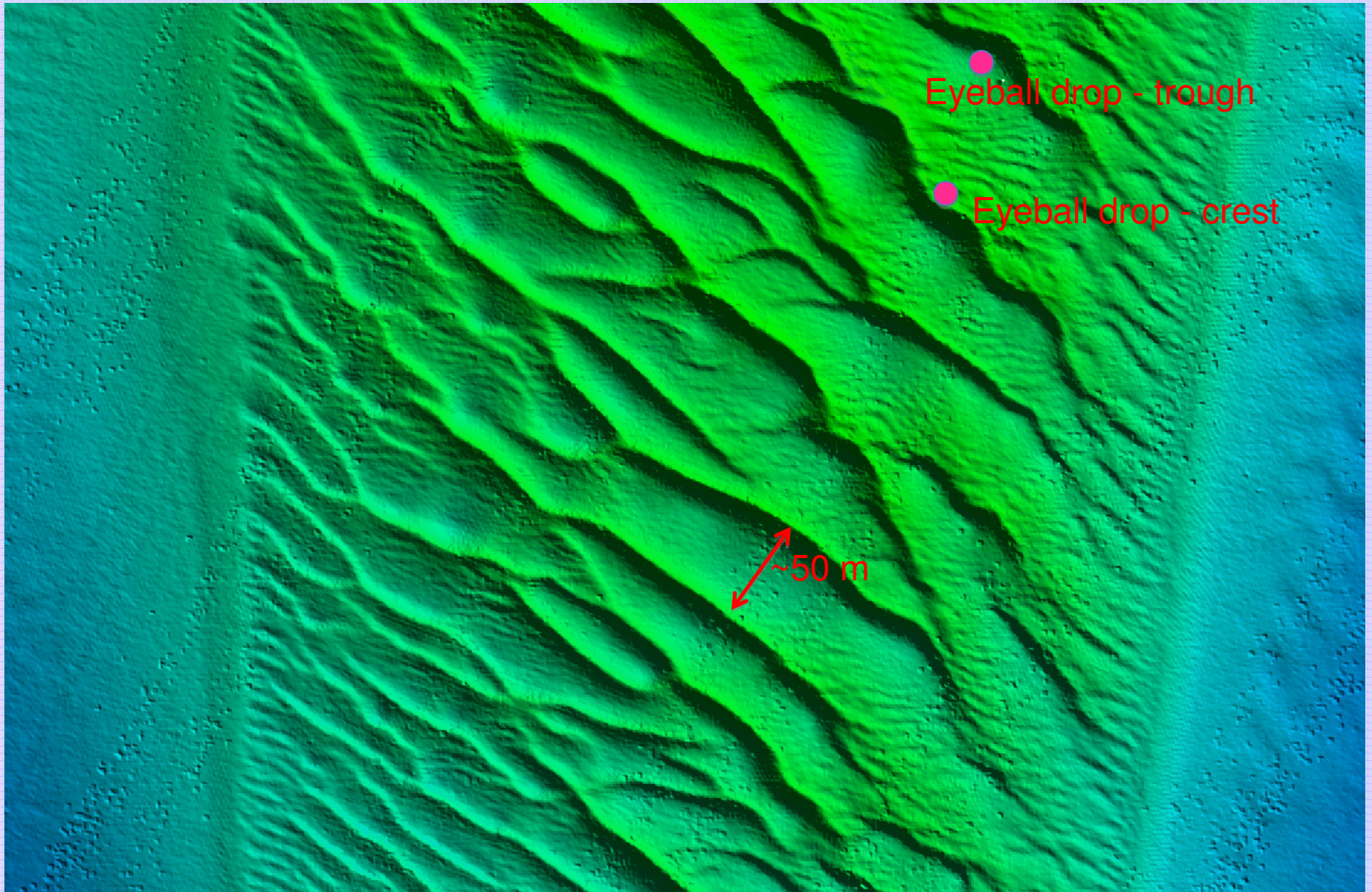
Sandwave Field

Known Sand Lance Habitat

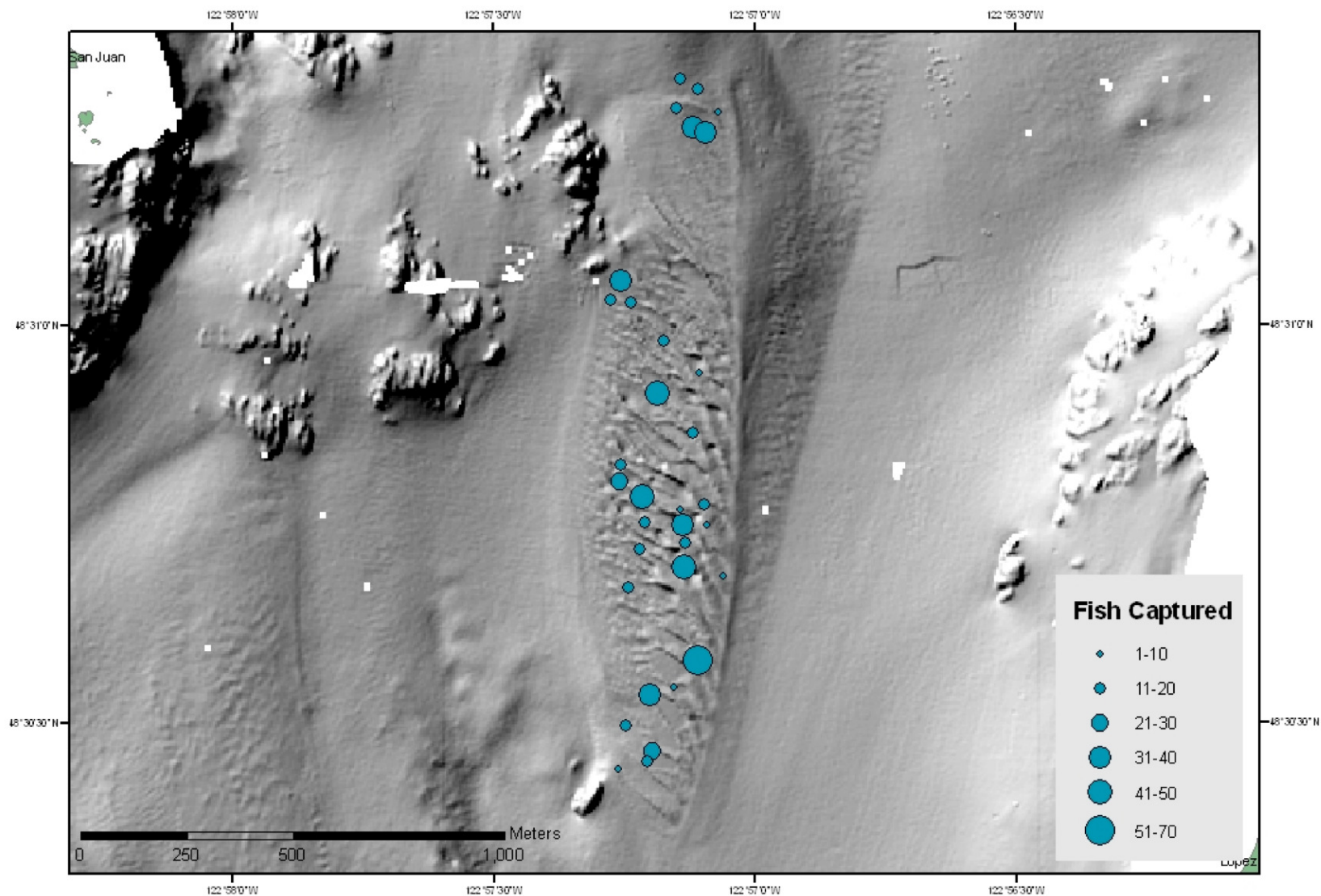


Blain, 2006 (FHL) - Tombolo

San Juan Channel Sand Waves



San Juan Channel Field - Total Fish Captured











Thanks for listening



Questions or comments?